

# Woodford Cedar Run Wildlife Refuge

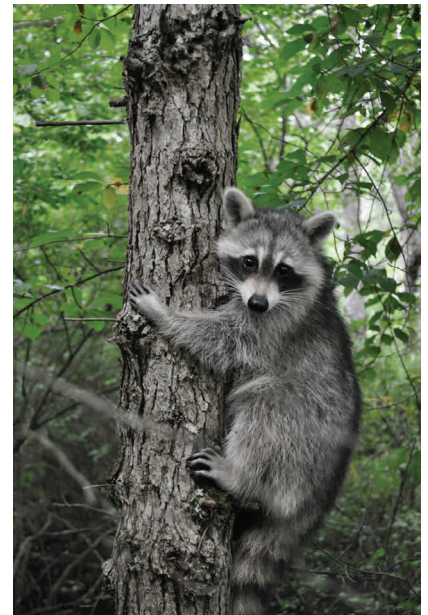
The pass is good for up to 2 adults and 3 children.



*The Woodford Cedar Run Wildlife Refuge is a non-profit facility specializing in environmental education of 19,000 school children and the rehabilitation of approximately 4,000 animals each year. Enjoy wandering the trails, watching the bird feeders, and observing the resident animals including eagles, hawks, falcons, vultures, owls, white-tailed deer, a gray fox and many others!*

## Facilities

- 171 wooded acres surrounding pristine Cedar Run Lake
- Elizabeth Woodford Nature Center with hands-on exhibits, library and offices
- Outdoor animal housing area with more than 60 native animals
- Wooded nature trails that link uplands and wetlands
- Wildlife rehabilitation hospital



MEDFORD, N.J.

**Located at: 4 Sawmill Road**

**Medford, NJ 08055**

For information such as hours and directions to Cedar Run Wildlife Refuge please call 856-983-3329, email [info@cedarrun.org](mailto:info@cedarrun.org) or visit their website @ <http://www.cedarrun.org>

For questions regarding the museum pass program, please refer to the guidelines sheet , contact us @ 856-767-2448 or email :

[berlinborolibrary@comcast.net](mailto:berlinborolibrary@comcast.net)